

ROTOVAC 360 GEAR REMOVAL GUIDE

Tools Required: 5/16" Nut Driver, 3/8" Nut Driver, 7/16" Wrench, 7/8" Wrench, Flat Head Screwdriver, Phillips Screwdriver, Rubber Mallet, 11/16" Socket, Teflon Tape.

**** IMPORTANT – BE SURE TO REMOVE ANY RESIDUAL METAL FRAGMENTS FROM GEARBOX BEFORE REPLACING GEARS. ****

360 GEARSET REMOVAL

- 1) Use Flat Head Screwdriver to remove Carbon Brush Caps P/N: RP-229, and Carbon Brushes P/N: RP-228 .



- 2) Use 3/8" Nut Driver to remove Acorn Nuts P/N: S-048 from Motor Cap. Remove motor cap P/N: RP-201(kit), shim washers P/N: RP-231, and spring washer P/N: RP-232 from top of armature.



- 3) Remove Motor Tube P/N: RP-201(kit). Note: If Motor Tube is stuck, grasp the tube tightly and gently strike the gearbox on top of the reducer bushing with a rubber mallet. **** IMPORTANT – DO NOT STRIKE OR JAR THE MOTOR TUBE, AS THIS MAY CAUSE FRACTURES TO THE MAGNANT WITHIN. ****



- 4) Remove all-thread motor screws P/N: RV-434.



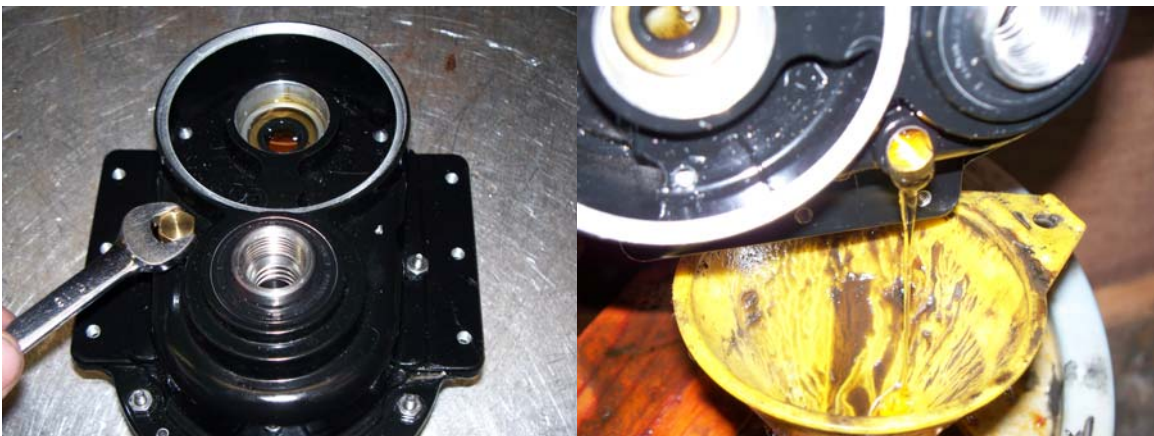
- 5) Grasp the Armature firmly in one hand and use a 7/8" wrench to loosen and remove the reducer bushing P/N: B-010.



- 6) Remove the Armature. Note: If Armature is stuck, it may be necessary to grasp the armature firmly in one hand and strike the upper gearbox with a rubber mallet, alternating between the front and back of the gearbox until the armature comes free. The armature base bearing may be still attached to the armature upon removal.



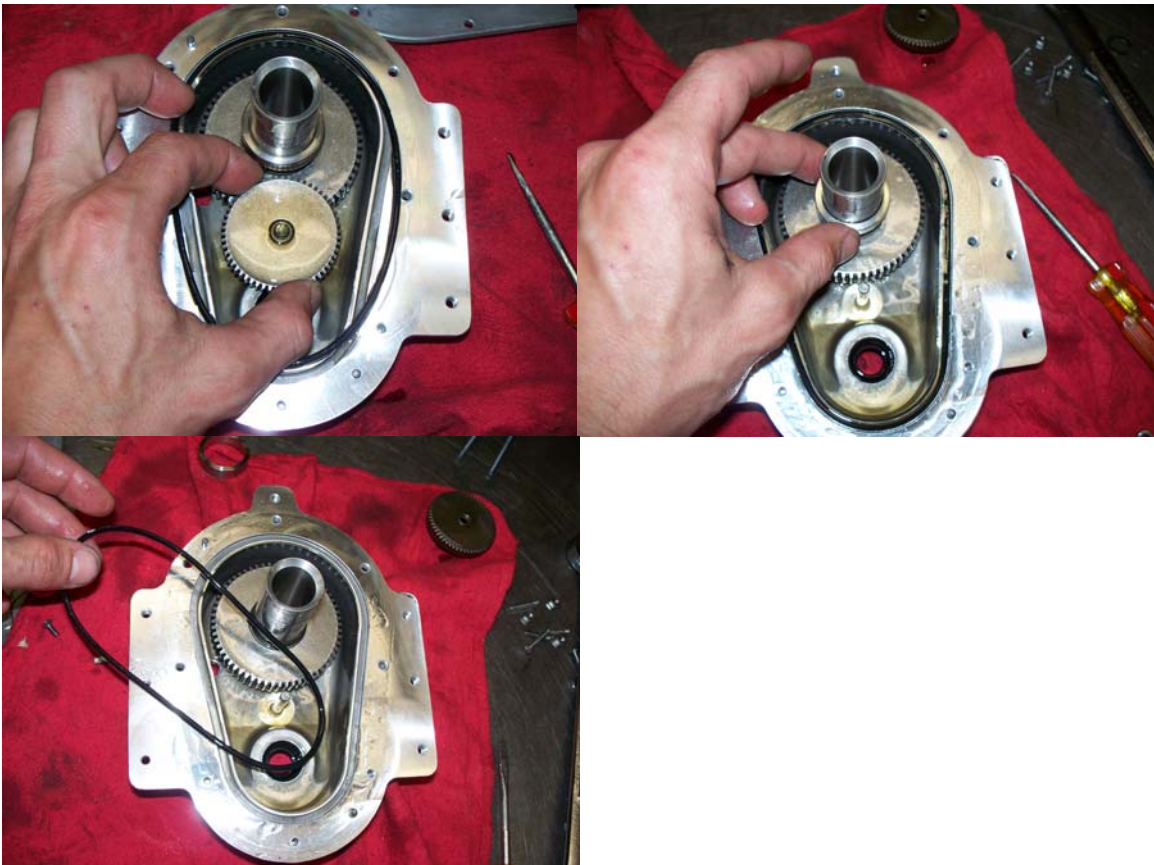
- 7) Use 7/16" wrench to remove brass Oil Plug P/N: B-009 and drain oil into suitable container.



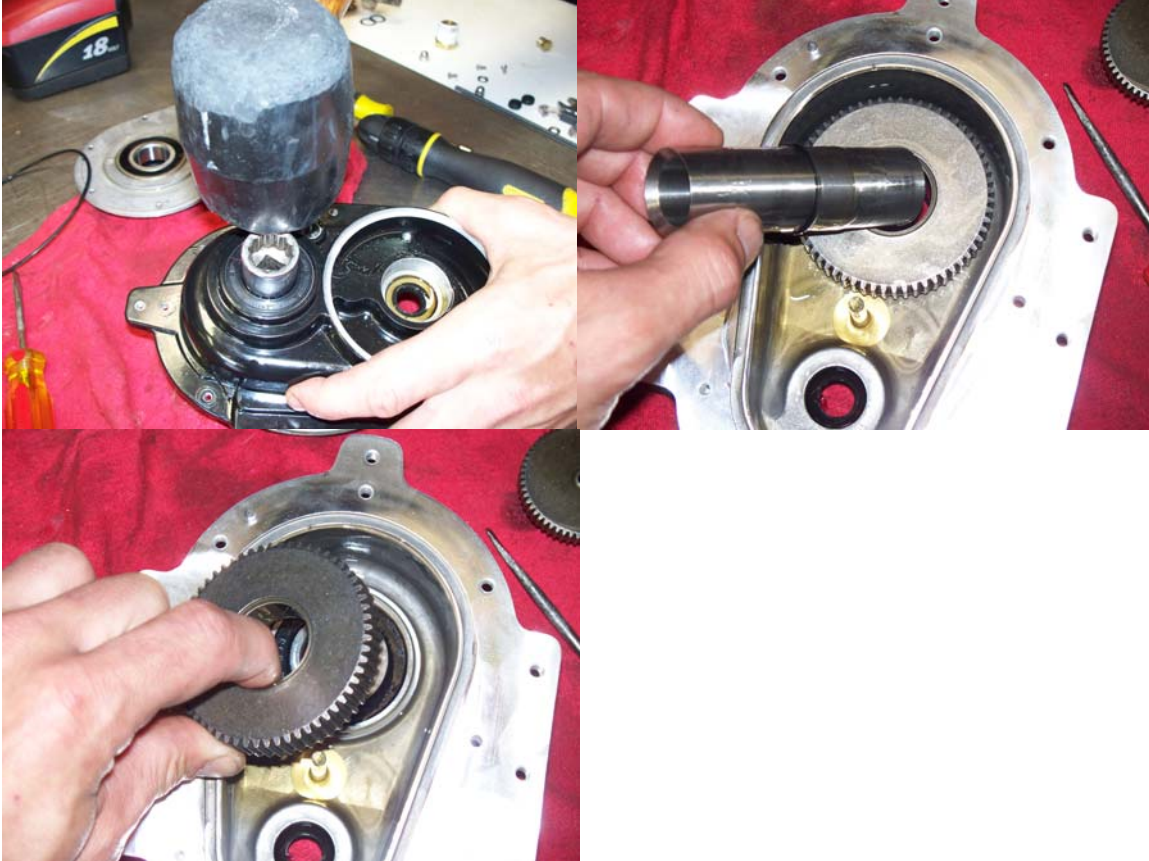
- 8) Use Phillips Screwdriver to remove the three bottom plate screws P/N: S-053 and remove bottom plate P/N: D-2319. Note: If bottom plate is stuck it may be necessary to use a flat head screwdriver to pry open the gearbox, being careful not to damage the gearbox housing. In some cases a press or vice may be required.



- 9) Remove Intermediate Gear P/N: B-2314, Gearbox Spacer P/N: D-2322, and O-Ring Oil Seal P/N: O-111.



- 10) Remove Large Gear P/N: B-2313 and Female Shaft P/N: B-2330AL. Note: If Female Shaft is stuck, it may be necessary to place an 11/16" socket on top of the female shaft and strike gently with a rubber mallet until it is free from gearbox. Note: If Large Bearing P/N: comes loose with the shaft it may be necessary to use a press to remove it from the shaft.



- 11) Remove all traces of oil and any fragments from broken gears. Note: Be sure to check inside the Armature Oil Seal for metal fragments, it may be necessary to use a flat head screwdriver. ****IMPORTANT – BE SURE TO REMOVE ANY RESIDUAL METAL FRAGMENTS FROM INSIDE GEARBOX BEFORE REPLACING GEARS, AS THESE WILL DAMAGE NEW GEARS AND ARMATURES. ****

