

NINJA Storm Sweeper

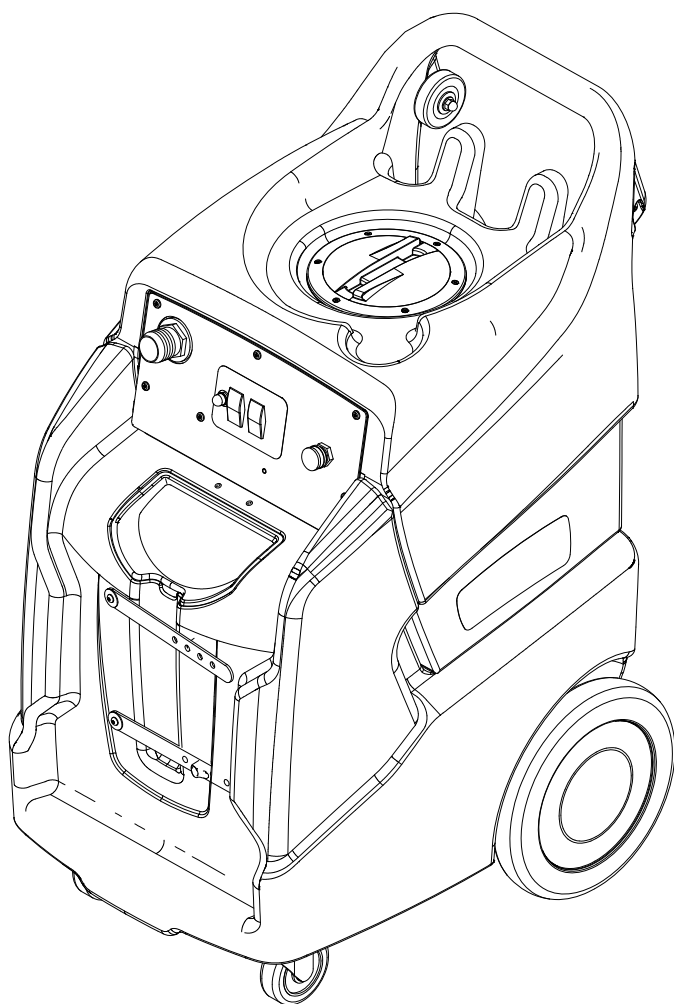
**CENTURY
400**

Operating instructions (ENG)

MODELS:



**NWCU1300N
10070780**



Read these instructions before using the machine.



Model: _____

Date of Purchase: _____

Serial Number: _____

Dealer: _____

Address: _____

Phone Number: _____

Sales Representative: _____

OVERVIEW

The Storm Sweeper is an electric powered water recovery system intended for commercial use. This appliance vacuums excess water from carpet and hard surfaces into the recovery tank.

Machine Data Log / Overview	2
Table of Contents	3
How to Use This Manual	4

Safety

IMPORTANT SAFETY INSTRUCTIONS	5
HAZARD INTENSITY LEVEL	6
Safety Labels	7
Grounding Instructions	8

Operations

Technical Specifications	9
Controls	10

Machine Operation

Recovery System	11
Auto Pump-out	11
Pre-Run Inspection	11
Equipment Set-up	11

Maintenance

Periodic Maintenance	12
Daily/Regular Maintenance	12
Vacuum Motor Replacement	13
Troubleshooting	14

PARTS

Control Panel	16
Frame	18
Electrical	20
Housing	22
Labels	24
Pump-out	26
Recovery	28
Vacuum	30
Wiring	32
Suggested Spare Parts	34
Serial Numbers	35

How to Use This Manual

This manual contains the following sections:

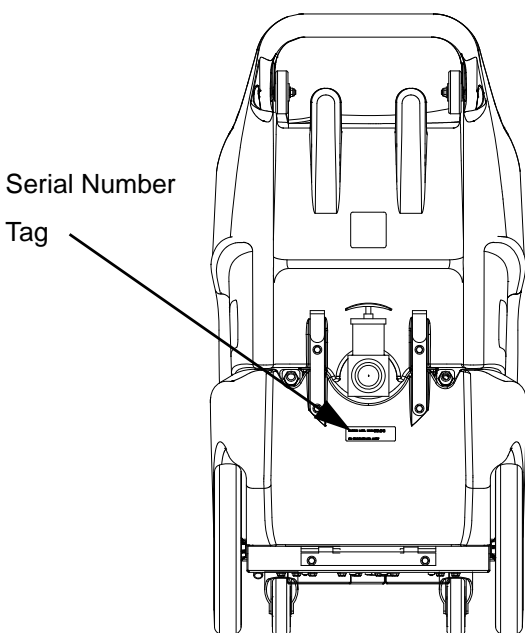
- How to Use This Manual
- Safety
- Operations
- Maintenance
- Parts List

The HOW TO USE THIS MANUAL section will tell you how to find important information for ordering correct repair parts.

Parts may be ordered from authorized dealers. When placing an order for parts, the machine model and machine serial number are important. Refer to the MACHINE DATA box which is filled out during the installation of your machine. The MACHINE DATA box is located on the inside of the front cover of this manual.

Model:	_____
Date of Purchase:	_____
Serial Number:	_____
Dealer:	_____
Address:	_____
Phone Number:	_____
Sales Representative:	_____

The model and serial number of your machine is located approximately where shown.



The SAFETY section contains important information regarding hazardous or unsafe practices of the machine. Levels of hazards are identified that could result in product damage, personal injury, or severe injury resulting in death.

The OPERATIONS section is to familiarize the operator with the operation and function of the machine.

The MAINTENANCE section contains preventive maintenance to keep the machine and its components in good working condition. They are listed in this general order:

- Periodic Maintenance
- Daily/Regular Maintenance
- Vacuum Motor Replacement
- Troubleshooting

The PARTS LIST section contains assembled parts illustrations and corresponding parts list. The parts lists include a number of columns of information:

- **REF** – column refers to the reference number on the parts illustration.
- **PART NO.** – column lists the part number for the part.
- **PRV NO.** – reference number.
- **QTY** – column lists the quantity of the part used in that area of the machine.
- **DESCRIPTION** – column is a brief description of the part.
- **SERIAL NO. FROM** – If this column has an (*) and a Reference number, see the SERIAL NUMBERS page in the back of your manual. If column has two asterisk (**), call manufacturer for serial number. The serial number indicates the first machine the part number is applicable to. The main illustration shows the most current design of the machine. When a boxed illustration is shown, it displays the older design.
- **NOTES** – column for information not noted by the other columns.

NOTE: If a service or option kit is installed on your machine, be sure to keep the KIT INSTRUCTIONS which came with the kit. It contains replacement parts numbers needed for ordering future parts.

NOTE: The manual part number is located on the lower left corner of the front cover.

IMPORTANT SAFETY INSTRUCTIONS

When using an electrical appliance, basic precaution must always be followed, including the following:

READ ALL INSTRUCTIONS BEFORE USING THIS MACHINE.

This machine is for commercial use.

⚠ WARNING: To reduce the risk of fire, electric shock, or injury:

Connect to a **properly grounded outlet**. See Grounding Instructions.

Do not leave the machine unattended. Unplug machine from outlet when not in use and before maintenance or service.

Use only indoors. Do not use outdoors or expose to rain.

Do not allow machine to be used as a toy. **Close attention** is necessary when used by or near children.

Use only as described in this manual. Use only manufacturer's recommended components and attachments.

Do not use damaged electrical cord or plug. Follow all instructions in this manual concerning grounding the machine. If the machine is **not working properly**, has been dropped, damaged, left outdoors, or dropped into water, return it to an authorized service center.

Do not pull or carry machine by electrical cord, use as a handle, close a door on cord, or pull cord around sharp edges or corners.

Do not run machine over cord. **Keep** cord away from heated surfaces.

Do not unplug machine by pulling on cord. To unplug, grasp the electrical plug, not the electrical cord.

Do not handle the electrical plug or machine with wet hands.

Do not operate the machine with any openings blocked. Keep openings free of debris that may reduce airflow.

This machine is intended for cleaning carpet only.

Do not vacuum anything that is burning or smoking, such as cigarettes, matches, or hot ashes.

This machine is not suitable for picking up health endangering dust.

Turn off all controls before unplugging.

Machine can cause a fire when operating near flammable vapors or materials. Do not operate this machine near flammable fluids, dust or vapors.

This machine is suitable for commercial use, for example in hotels, schools, hospitals, factories, shops and offices for more than normal housekeeping purposes.

Maintenance and repairs must be done by qualified personnel.

If foam or liquid comes out of machine, switch off immediately.

SAVE THESE INSTRUCTIONS

The following symbols are used throughout this guide as indicated in their descriptions:

HAZARD INTENSITY LEVEL

There are three levels of hazard intensity identified by signal words -**WARNING** and **CAUTION** and **FOR SAFETY**. The level of hazard intensity is determined by the following definitions:

WARNING:

WARNING - Hazards or unsafe practices which COULD result in severe personal injury or death.

CAUTION:

CAUTION - Hazards or unsafe practices which could result in minor personal injury or product or property damage.

FOR SAFETY: To Identify actions which must be followed for safe operation of equipment.

Report machine damage or faulty operation immediately. Do not use the machine if it is not in proper operating condition. Following is information that signals some potentially dangerous conditions to the operator or the equipment. Read this information carefully. Know when these conditions can exist. Locate all safety devices on the machine. Please take the necessary steps to train the machine operating personnel.

FOR SAFETY:

DO NOT OPERATE MACHINE:

Unless Trained and Authorized.

Unless Operation Guide is Read and understood.

In Flammable or Explosive areas.

In areas with possible falling objects.

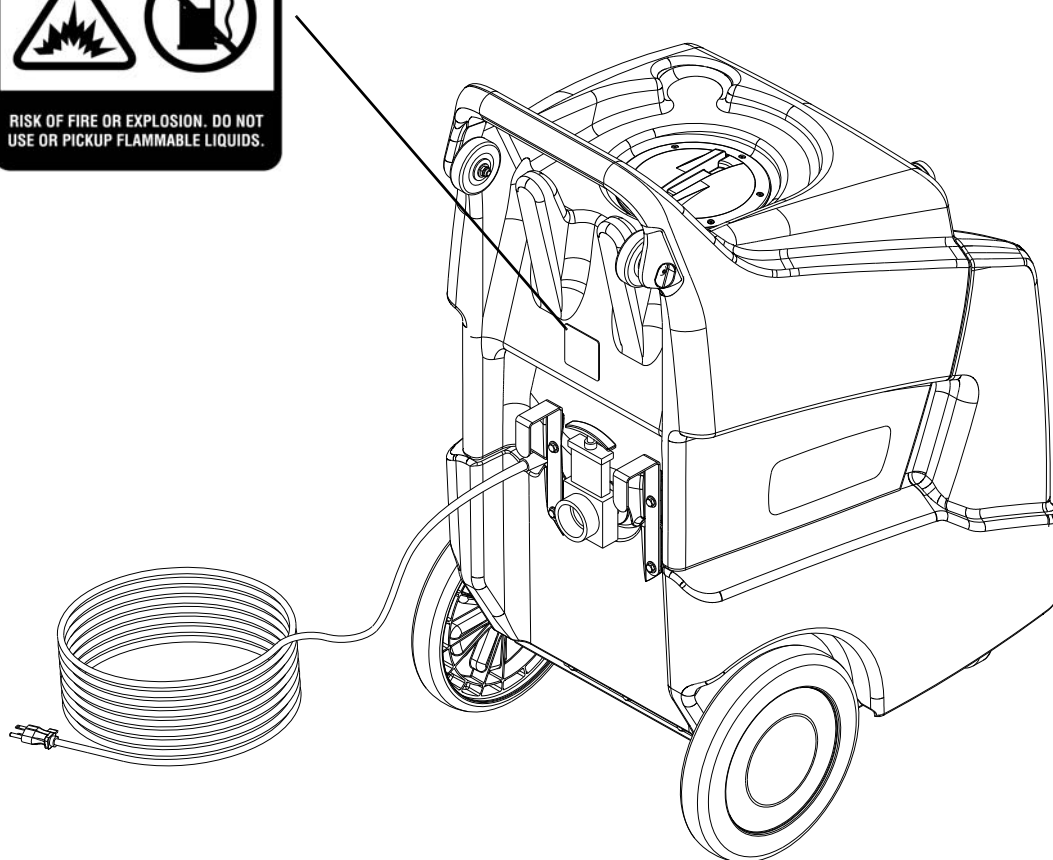
WHEN SERVICING MACHINE:

Avoid moving parts. Do not wear loose clothing; jackets, shirts, or sleeves when working on the machine. Use only manufacturer approved replacement parts.

Safety Labels

NOTE: These drawings indicate the location of safety labels on the machine. If at any time the labels become illegible, promptly replace them.

Label Warning
86244300
PRV # 500955



Grounding Instructions

THIS PRODUCT IS FOR COMMERCIAL USE ONLY.

ELECTRICAL:

In the USA this machine operates on a standard 15 amp 115V, 60 hz, A.C. power circuit. The amp, hertz, and voltage are listed on the data label found on each machine. Using voltages above or below those indicated on the data label will cause serious damage to the motors.

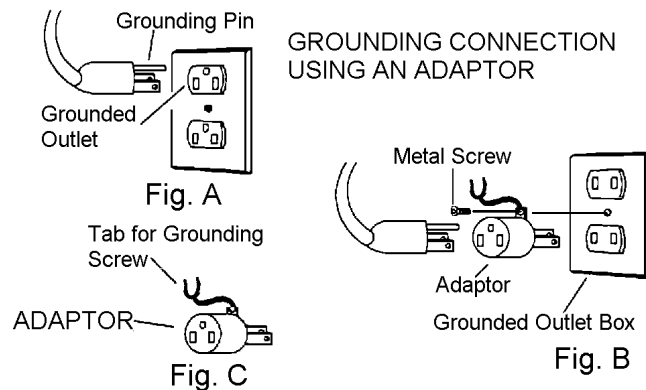
EXTENSION CORDS:

If an extension cord is used, the wire size must be at least one size larger than the power cord on the machine, and must be limited to 50 feet (15.5m) in length.

GROUNDING INSTRUCTIONS:

This appliance must be grounded. If it should malfunction or break down, grounding provides a path of least resistance for electric current to reduce the risk of electric shock. This appliance is equipped with a cord having an equipment-grounding conductor and grounding plug. The plug must be inserted into an appropriate outlet that is properly installed and grounded in accordance with all local codes and ordinances.

This appliance is for use on a nominal 120-volt circuit, and has a grounded plug that looks like the plug in "Fig. A". A temporary adaptor that looks like the adaptor in "Fig. C" may be used to connect this plug to a 2-pole receptacle as shown in "Fig. B", if a properly grounded outlet is not available. The temporary adaptor should be used only until a properly grounded outlet (Fig. A) can be installed by a qualified electrician. The green colored rigid ear, lug, or wire extending from the adaptor must be connected to a permanent ground such as a properly grounded outlet box cover. Whenever the adaptor is used, it must be held in place by a metal screw.



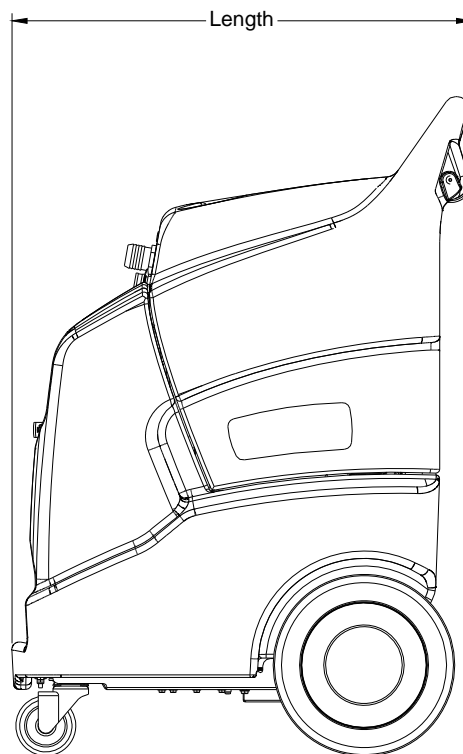
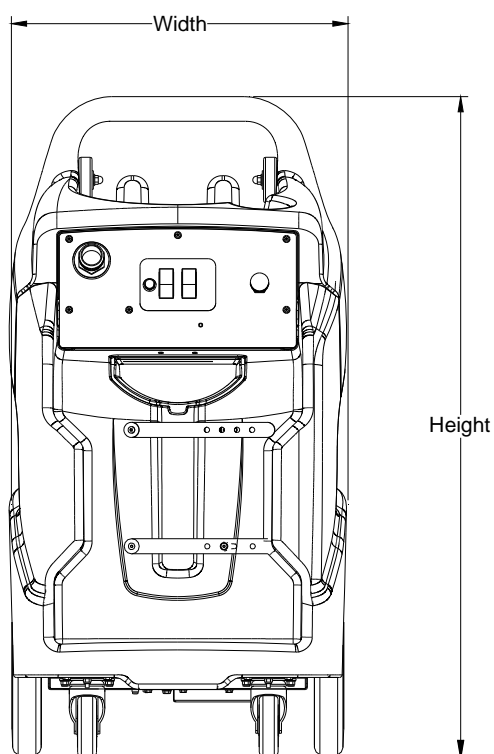
Note: Adaptors are not allowed in Canada.

⚠ WARNING:

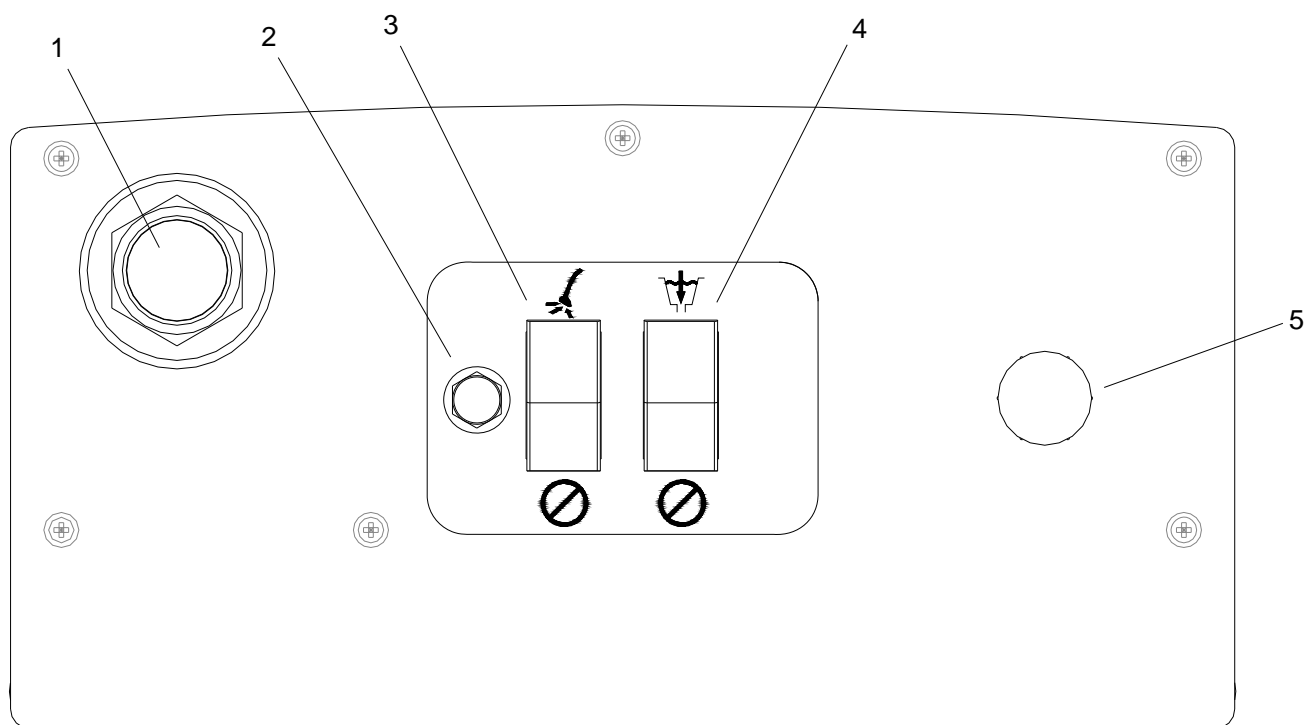
Improper connection of the equipment-grounding conductor can result in a risk of electric shock. Check with a qualified electrician or service person if you are in doubt as to whether the outlet is properly grounded. Do not modify the plug provided with the appliance - if it will not fit the outlet, have a proper outlet installed by a qualified electrician.

Technical Specifications

ITEM	MEASURE
Electrical	115 Volt, 60 hz, 12A
Recovery Capacity	11 Gal
Height	43 inches
Length	30 inches
Width	22 inches
Vacuum Motor	Single 3 Stage
Weight-Empty	107 lbs
Power Cord	1 x 40 feet in-line GFCI
Auto Pump-out	2 x 5.0 GPM Diaphragm Pumps



Controls



- 1. Vacuum Accessory Tool Hook-up
- 2. Vacuum Circuit Breaker
- 3. Vacuum Switch

- 4. Auto Pump-out Switch
- 5. Auto Pump-out Connection

Machine Operation

Recovery System

The recovery system uses suction from the vacuum motor to draw water and debris into the recovery tank. Large debris is collected in the mesh bag attached to recovery inlet. The recovery tank may be emptied manually using the gate valve or continuously using the auto pump-out system. A shutoff float will impede the vacuum flow when the recovery tank is full.

Auto Pump-out

The auto pump-out system uses a run-dry diaphragm pump. The pump will run whenever the pump-out switch is turned on. The primary strainer is located in the recovery tank. A secondary strainer is attached to the pump head to protect the pump from a damaged or improperly installed primary strainer.

WARNING:

Do not turn on auto pump-out with cap attached to the pump-out fitting. Pump-out system damage may occur from excessive pressure.

Pre-Run Inspection

1. Check all fittings and connectors for proper assembly.
2. Check all hoses for leaks. Repair or replace any damaged hoses.
3. Check power cord(s) for any damage. If damaged, replace.

Equipment Set-up

1. Plug power cord from machine into properly grounded wall outlet.
2. Turn vacuum motor switch on and off to make sure there is electrical power at machine.
3. If using the auto pump-out feature, connect pump-out hose to pump-out fitting on control panel. Place opposite end of pump-out hose in appropriate drain area.
4. Connect vacuum hose to machine. Slide the swivel cuff over the outlet on the tank,
5. Turn pump and vacuum switches to the on position.

Periodic Maintenance

Twice a month, flush a white vinegar solution (one quart vinegar to two gallons of water) or anti-browning solution (mixed as directed) through the machine. This will prevent build-up of alkaline residue in the system.

Periodically inspect all hoses, electrical cables and connections on your machine. Frayed or cracked hoses should be repaired or replaced to eliminate vacuum or solution pressure loss. The electrical cable must be well insulated and cable connector screw kept tight. If the cable insulation is broken or frayed, repair or replace immediately. Don't take chances with electrical fire or shock.

Daily/Regular Maintenance

WARNING:

Before making any repairs or adjustments to the machine, disconnect the power cords from the electrical source.

1. Inspect and clean recovery mesh bag and pump-out strainer.
2. Flush pump-out system with 1 to 2 gallons of clean water.
3. After each use, rinse tank with fresh water. Periodically inspect the recovery tank and decontaminate if necessary, using a Hospital Grade Virucide or a 10-1 bleach to water solution. Waste water should be disposed of properly.

CAUTION:

Do not allow machine to freeze.

SERVICE SCHEDULE	DAILY	WEEKLY	QUARTERLY
Check machine for cord damage	*		
Check recovery dome and gasket for damage and cleanliness	*		
Check hoses for wear, blockages, or damage	*		
Check handles, switches, and knobs for damage	*		
Clean out recovery tank and check float valve to make sure it moves freely	*		
Clean outside of all tanks and check for damage	*		
Clean recovery mesh bag	*		
Clean pump-out strainers and run clean water through pump-out system	*		
Run vac motor for at least one minute to allow motor to dry	*		
Store with dome off tank to allow the tank to dry	*		
Check all gaskets for wear and leakage		*	
Check cables for fraying		*	
Check overall performance of machine		*	
Check vac motor carbon brushes			*

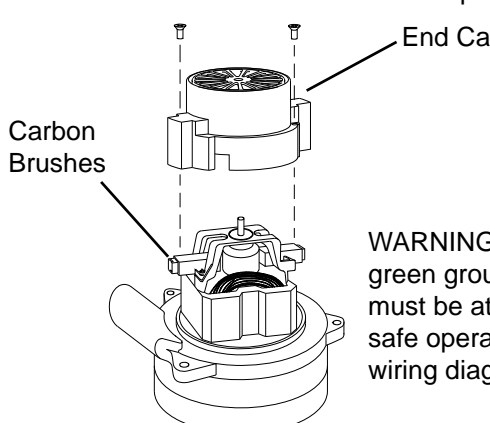
⚠ WARNING:

Only qualified maintenance personnel are to perform the following repairs.

Vacuum Motor Replacement

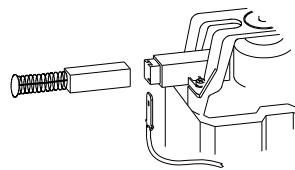
1. Turn off all switches and unplug machine.
2. Remove hardware under front of machine to access component compartment.
3. Remove vacuum motor cover and disconnect motor wires.
4. Remove the vacuum motor.
5. Reverse process to install vacuum motor.

Vacuum Motor Carbon Brushes Replacement



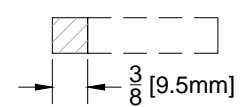
WARNING: The green ground wire must be attached for safe operation. See wiring diagram.

If armature commutator is grooved, extremely pitted or not concentric, the motor will need to be replaced or sent to a qualified service center.



Important:

These brushes wear quicker as the length shortens due to increased heat. Spring inside brush housing will damage motor if brushes are allowed to wear away completely.

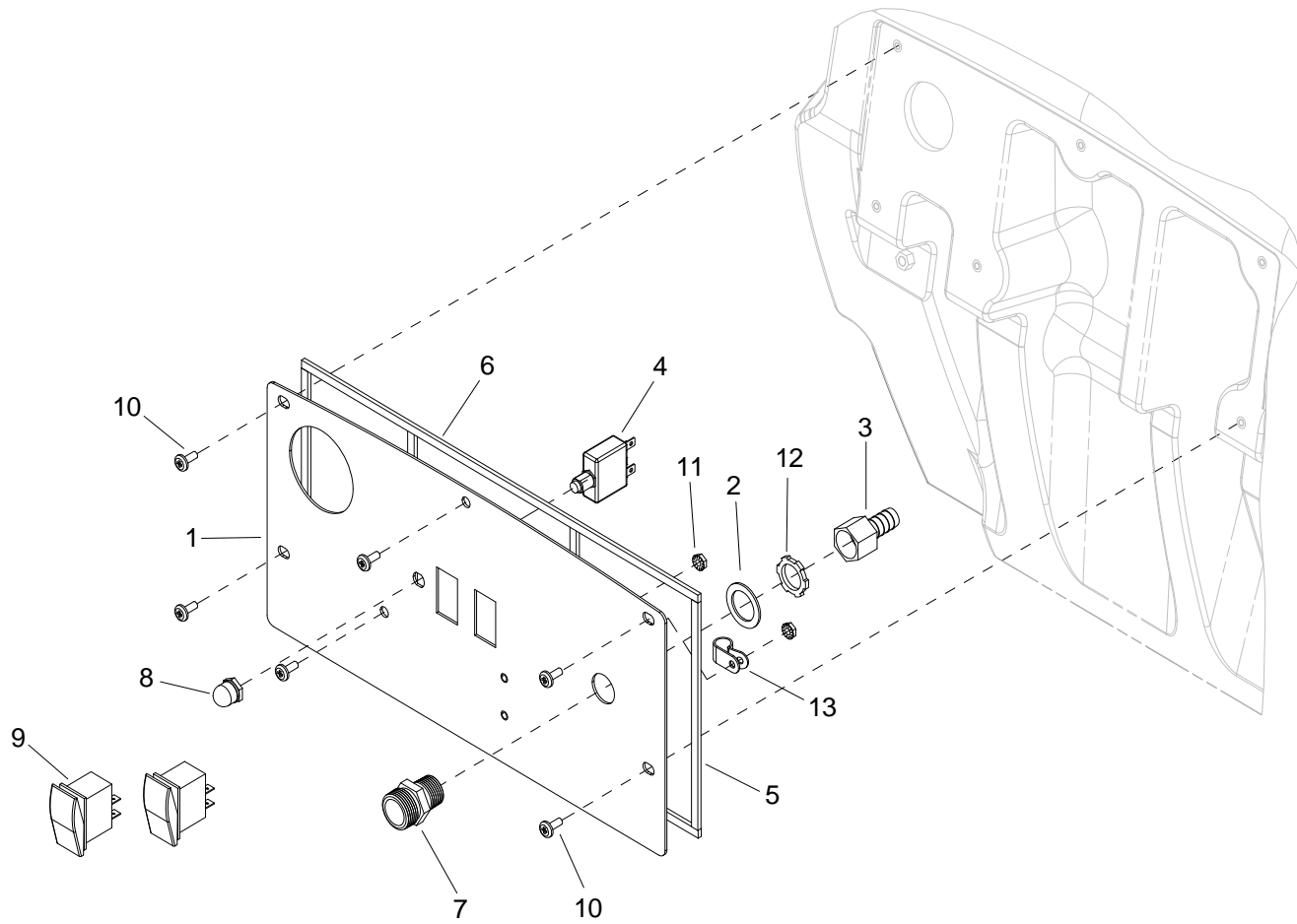


Periodically check the length of the carbon brushes. Replace both carbon brushes when either is less than 3/8" (9.5mm) long.

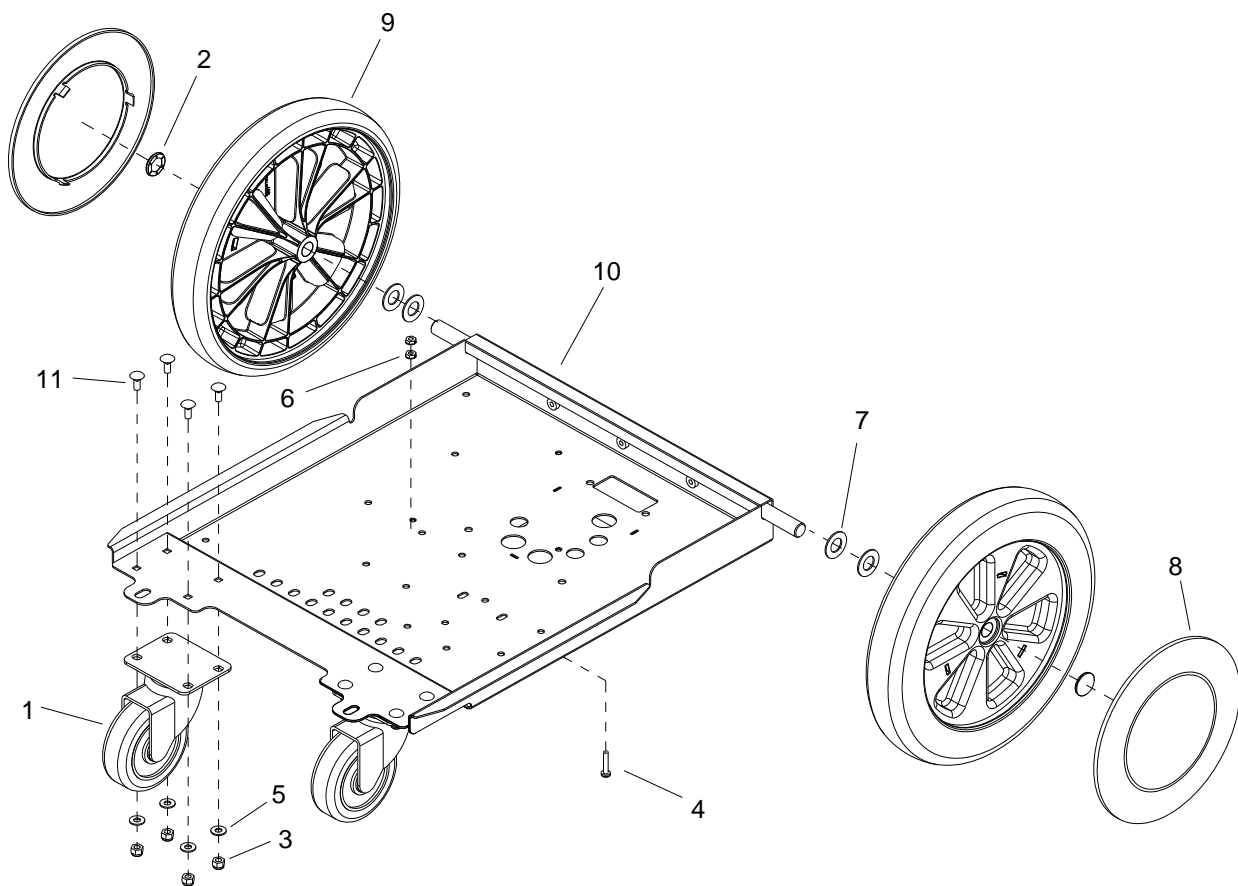
Troubleshooting

PROBLEM	CAUSE	SOLUTION
Loss of Power	Unit not plugged in	Connect unit to 3 prong grounded outlet.
	Dead electrical circuit	Check building circuit breaker or fuse box.
	Faulty power cord	Replace
Electrical shock	Receptacle not grounded	Contact an electrician to check building's wiring
	Internal wiring problem	Have a trained service technician check machine's wiring
Vac motor speed varies or doesn't run	Vacuum circuit breaker tripped	Reset Breaker
	Faulty vacuum motor	Replace
	Faulty switch	Replace
Loss of vacuum	Loose vacuum dome	Center and seal dome over tank
	Crack in dome or poor joint	Replace or repair using acrylic plastic cement only
	Lint or dirt clogging vacuum screen	With power off clean screen
	Loose cuffs on vacuum hose	Tighten cuffs turning counterclockwise
	Vac motor seals leaking	Replace
	Floor tool vac chamber clogged	Wash out with hose. Pick lint out with a wire
	Vacuum hose damaged	Replace
	Recovery tank full / Float ball stuck in the up position	Turn off power, drain recovery tank.
Pump-out system has no flow	Faulty pump-out switch	Replace pump-out switch
	Faulty pump-out pump	Replace pump-out pump
	Blown fuse	Replace fuse
Pump-out system has low flow	Clogged primary strainer	Clean primary strainer
	Clogged secondary strainer	Clean secondary strainer

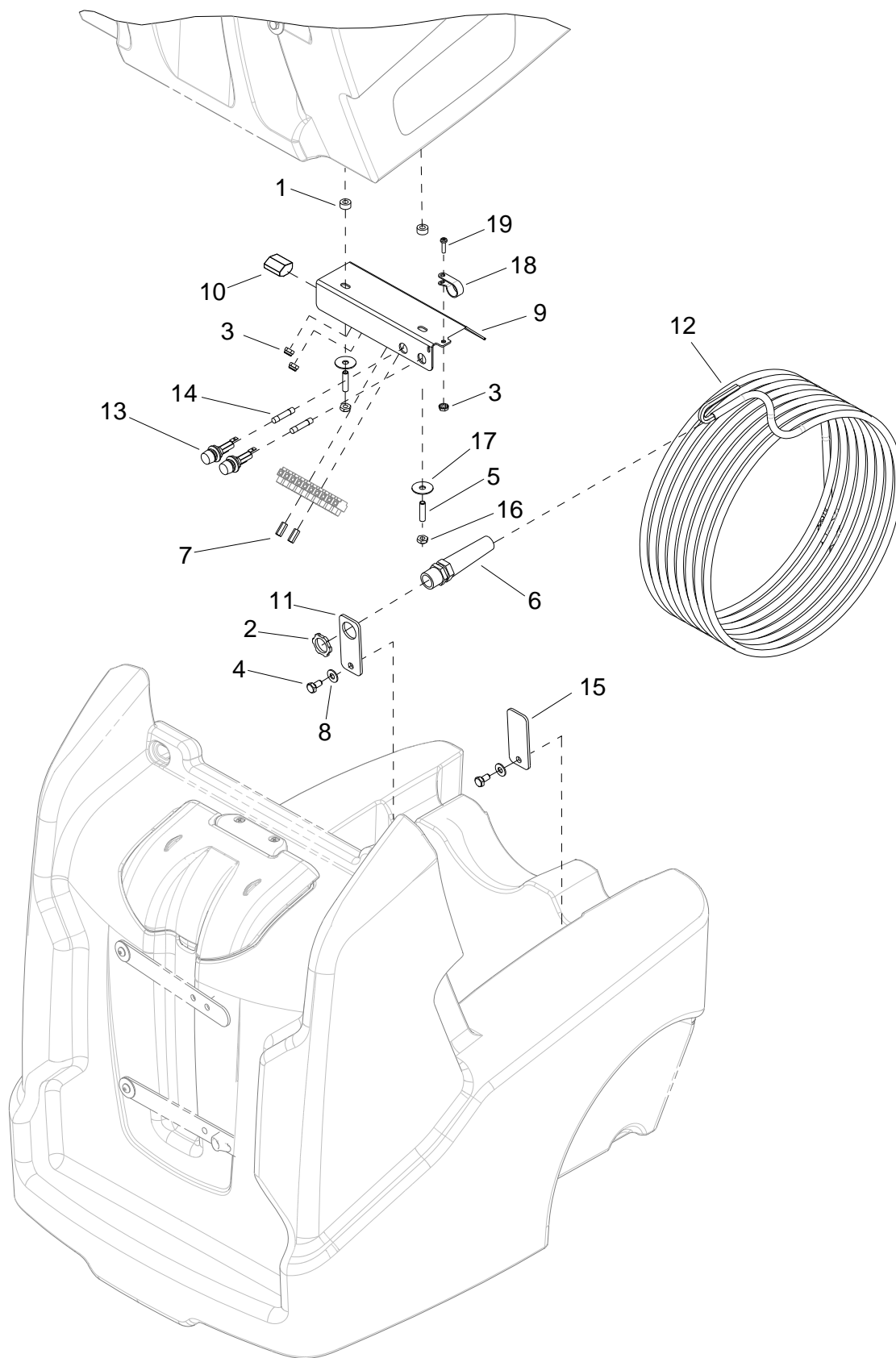
PARTS



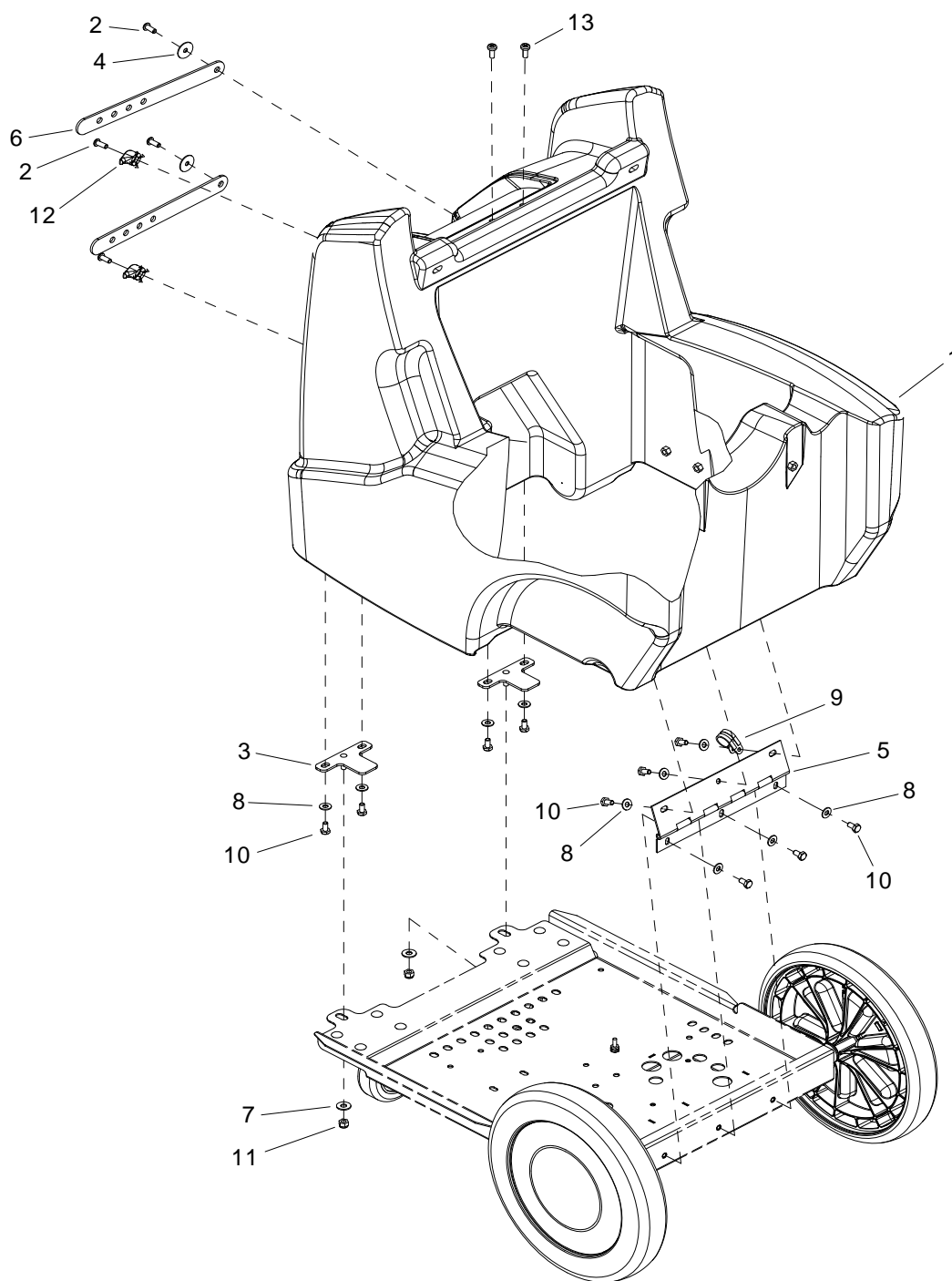
REF	PART NO.	PRV NO.	QTY	DESCRIPTION	SERIAL NO. FROM	NOTES
1	86328340	-	1	PANEL, CONTROL, STORM		
2	86327130	-	1	WASHER,.88IDX1.28ODX.062THK NYL		
3	86327080	-	1	HOSEBARB, 1/2 FPT X 1/2 BR		
4	86318320	-	1	BREAKER, 13A, 250VAC, 32VDC		
5	86313030	-	4	GASKET, .125 T X .25 W X 7.2		
6	86313020	-	2	GASKET, .125 T X .25 W X 15.6		
7	86173530	790506	1	ADAPTER, HOSE 1/2M X 3/4MGT		
8	86008900	80845	1	BOOT, SEAL PUSH BUTTON 7/16		
9	86007140	72130	2	SWITCH, SPST 2-POSITION ROCKER		
10	86276820	70740	6	SCR, 10-32 X 1/2 PTHMS BLK NP		
11	86005700	57104	2	NUT, 10-32 HEX W/STAR		
12	86005670	57040	1	NUT, 1/2 NPT CONDUIT		
13	86002370	20035	1	CLAMP, 7/16 NYLON		



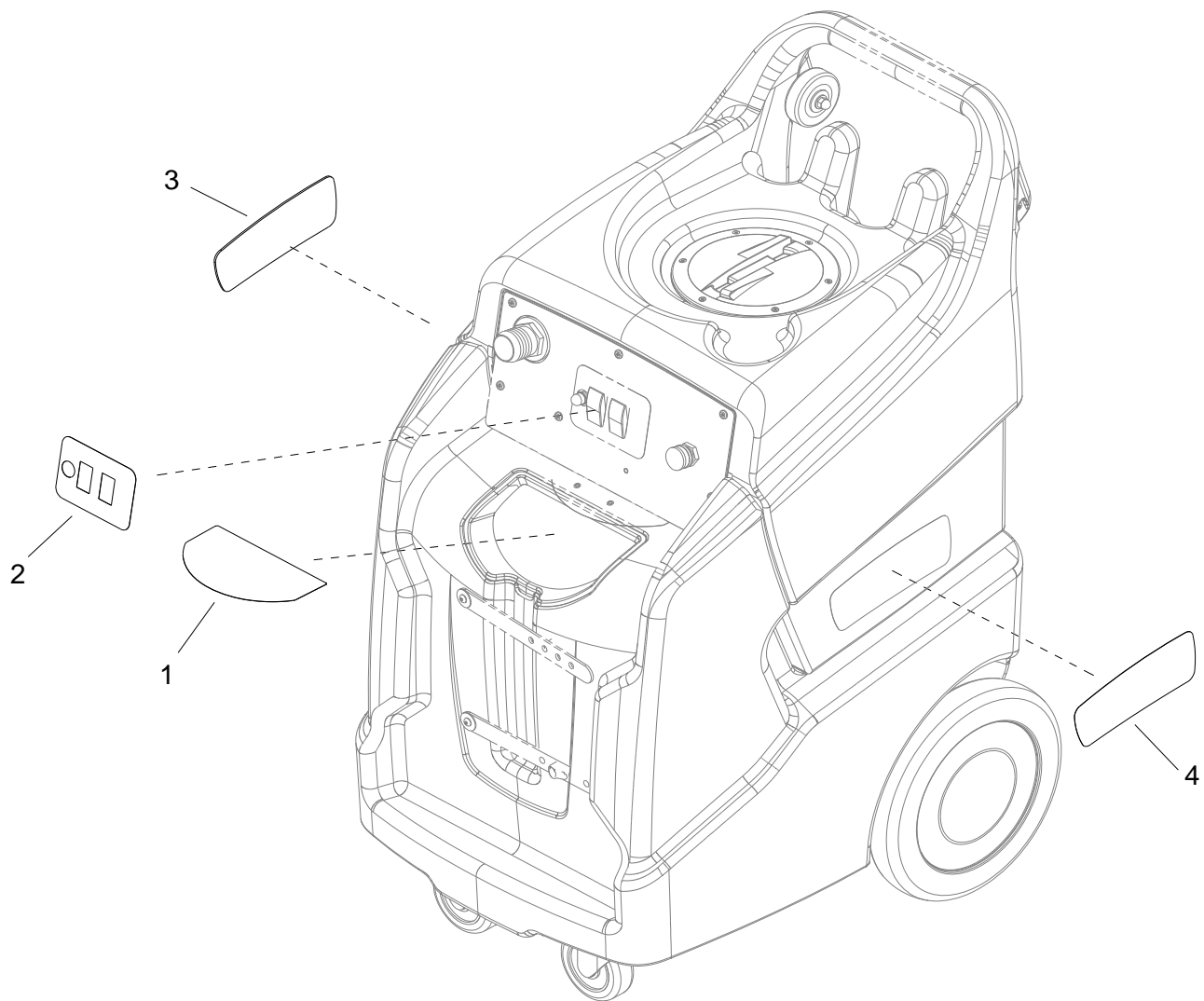
REF	PART NO.	PRV NO.	QTY	DESCRIPTION	SERIAL NO. FROM	NOTES
1	86199430	040-03	2	CASTER, SWIVEL 4" 250# CPCTY		
2	86001660	41236	2	HUBCAP, 5/8 SHAFT		
3	86005810	57245	8	NUT, 1/4-20 HEX NYLOCK SS		
4	86276080	70595	1	SCR, 10-32 X 1" PPHMS GRN		
5	86010630	87013	8	WASHER, 1/4 X 5/8 FLAT SS		
6	86005700	57104	2	NUT, 10-32 HEX W/STAR		
7	86010730	87088	4	WASHER, 5/8 X 1-3/16 FLAT SS		
8	86300070	-	2	HUBCAP, 9.75" WHEEL, BLACK		
9	86309790	-	2	WHEEL, 12" X 2.25"		
10	86312830	-	1	FRAME, 5/8" AXLE, DUAL VAC		
11	86277500	70853	8	SCR, 1/4-20 X 5/8 CARR SS		



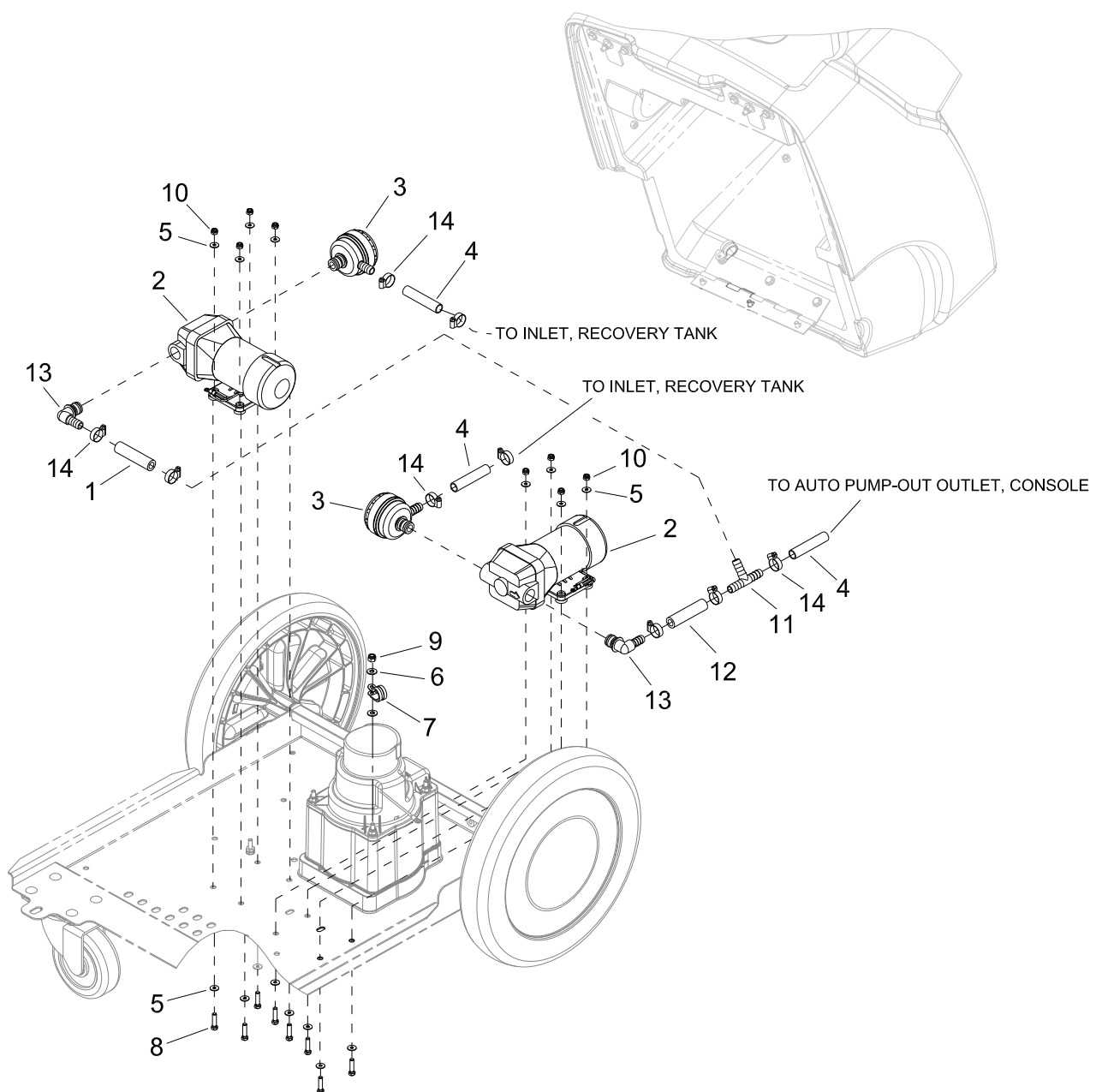
REF	PART NO.	PRV NO.	QTY	DESCRIPTION	SERIAL NO. FROM	NOTES
1	86201510	390-26	2	SPACER NYLON 1/4ID X 1/2 OD		
2	86005670	57040	1	NUT, 1/2 NPT CONDUIT		
3	86005700	57104	3	NUT, 10-32 W/STAR WASHER PLTD		
4	86273830	70020	2	SCR, 1/4-20 X 1/2 HHCS SS		
5	86006850	70393	2	SET SCR, 1/4-20 X 1.25L		
6	86256200	73200	1	STRAIN RELIEF, 1/2 NPT FLEX		
7	86255900	73538	2	STANDOFF, 6-32 X 5/8 HEX NYL		
8	86010630	87013	2	WASHER, 1/4 X 5/8 FLAT SS		
9	86316460	-	1	BRKT, ELECTRICAL		
10	86316540	-	1	CONNECTOR, 5 POS, PUSH WIRE		
11	86316700	-	1	BRKT, CORD STRAIN RELIEF		
12	86325300	-	1	CORD ASM, 14/3 X 40' GFCI BLK		
13	86319090	-	2	FUSE HOLDER, PANEL MNT		
14	86319110	-	2	FUSE, 1/4" X 1 1/4", 4A		
15	86317580	-	1	BRKT, CORD, BLANK		
16	86005810	57245	2	NUT, 1/4-20 NYLOCK		
17	86323330	-	2	WASHER, 1/4" ID X 1.0D FLAT BLK		
18	86198460	20008	1	CLAMP, 5/8 NYLON UL/CSA		
19	86006590	70088	1	SCREW, 10-32 X 1/2 PPHMS SS NP		



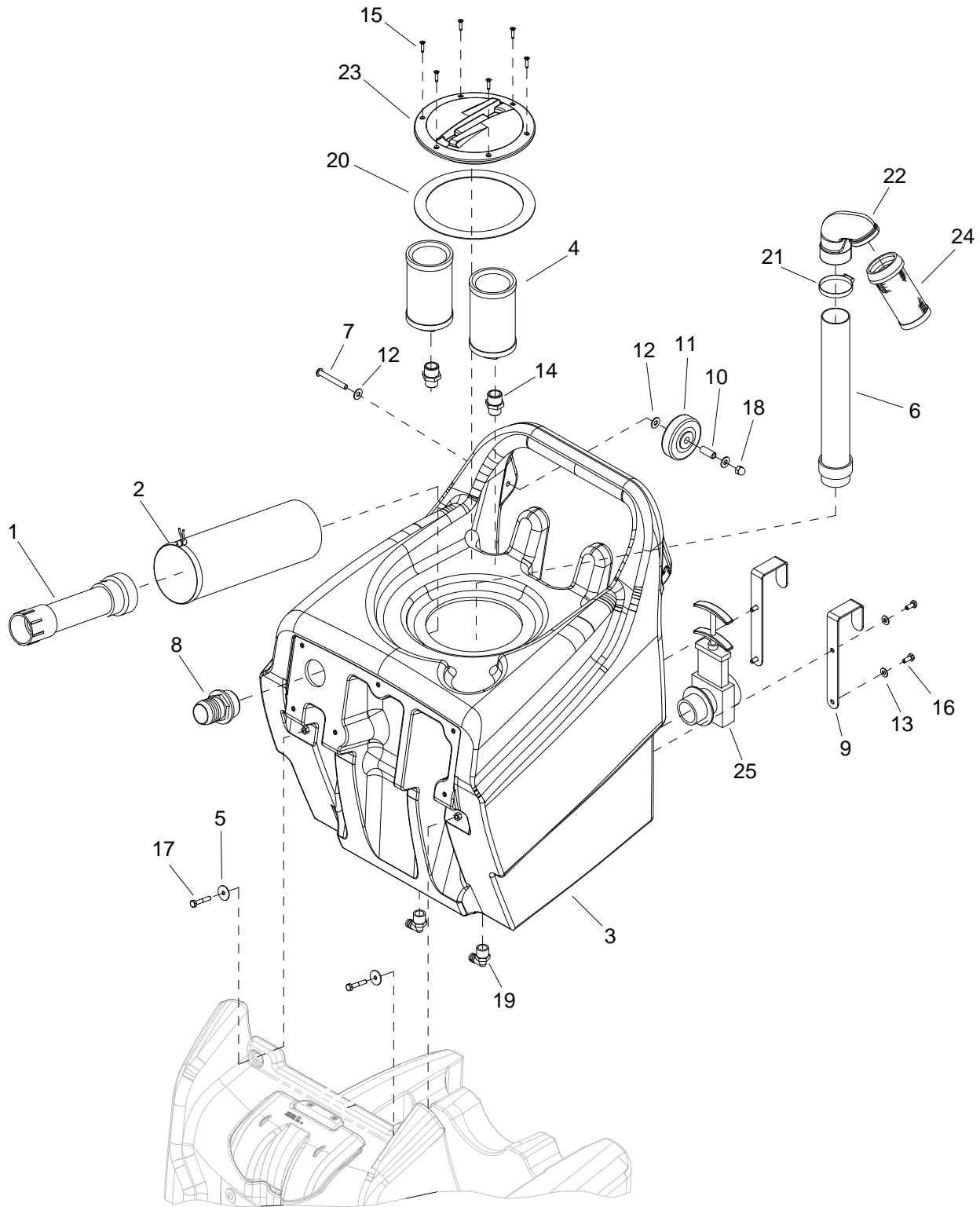
REF	PART NO.	PRV NO.	DESCRIPTION	QTY	SERIAL NO. FROM	NOTES
1	86328290	-	TANK, SOL, TRIM, STORM	1		
2	86324210	-	SCR, 1/4-20 X 5/8 BHCS BLK	4		
3	86324030	-	BRKT, MOUNTING, SOLUTION	2		
4	86323330	-	WASHER, 1/4 ID X 1.0 OD FLAT, BLK	2		
5	86311990	-	HINGE, 9.5" LG X .074 THK	1		
6	86297620	-	STRAP, HAND TOOL	2		
7	86010670	87029	WASHER, 5/16 X 3/4 SS	2		
8	86010630	87013	WASHER, 1/4 X 5/8 FLAT SS	10		
9	86233410	81270	CLAMP, 3/4 DIA CUSHION .406 DIA	1		
10	86273830	70020	SCR, 1/4-20 X 1/2 HHCS SS	10		
11	86005810	57245	NUT, 1/4-20 HEX NYLOCK SS	2		
12	86238460	36259	HOOK, STRAP	2		
13	86276820	70740	SCR, 10-32 X 1/2 PTHMS BLK NP	2		



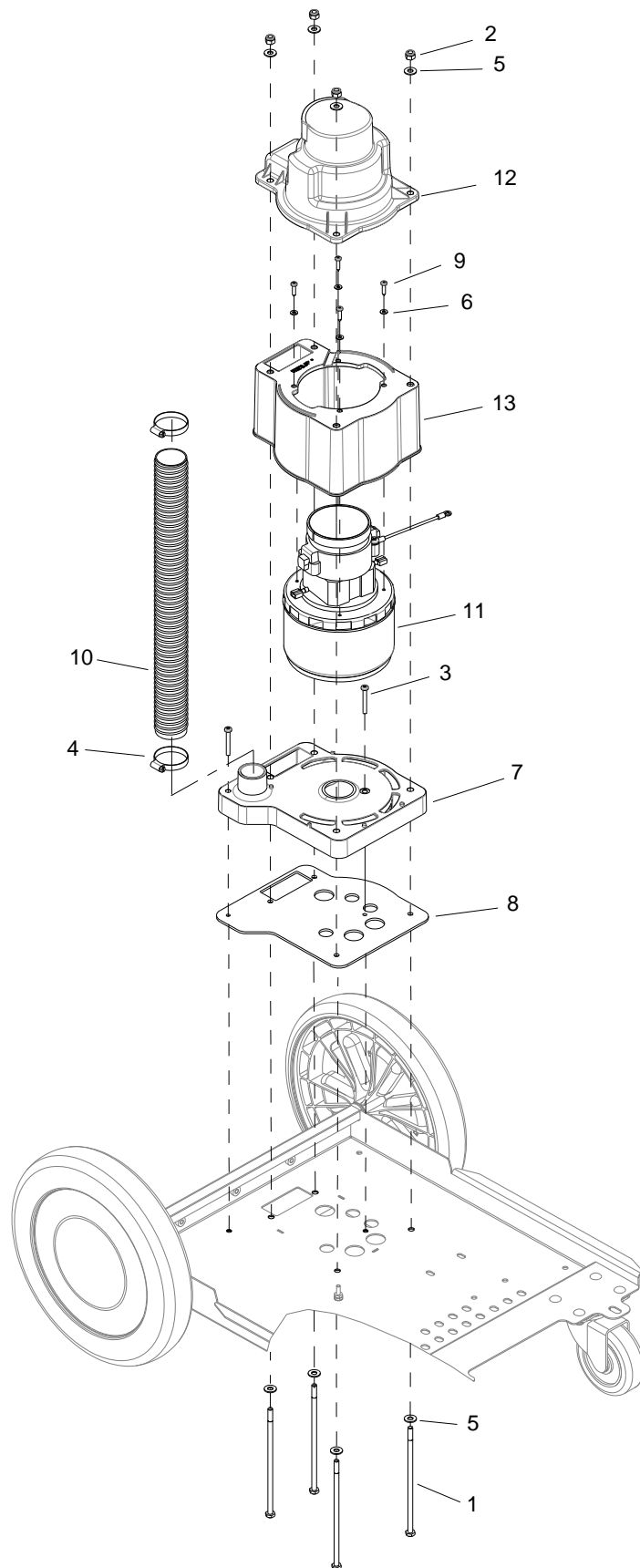
REF	PART NO.	PRV NO.	QTY	DESCRIPTION	SERIAL NO. FROM	NOTES
1	86328780	-	1	LABEL, SOLUTION TANK		
2	86328380	-	1	LABEL, CONSOLE, STORM		
3	86318270	-	1	NINJA WARRIOR, RH		
4	86318260	-	1	NINJA WARRIOR, LH		



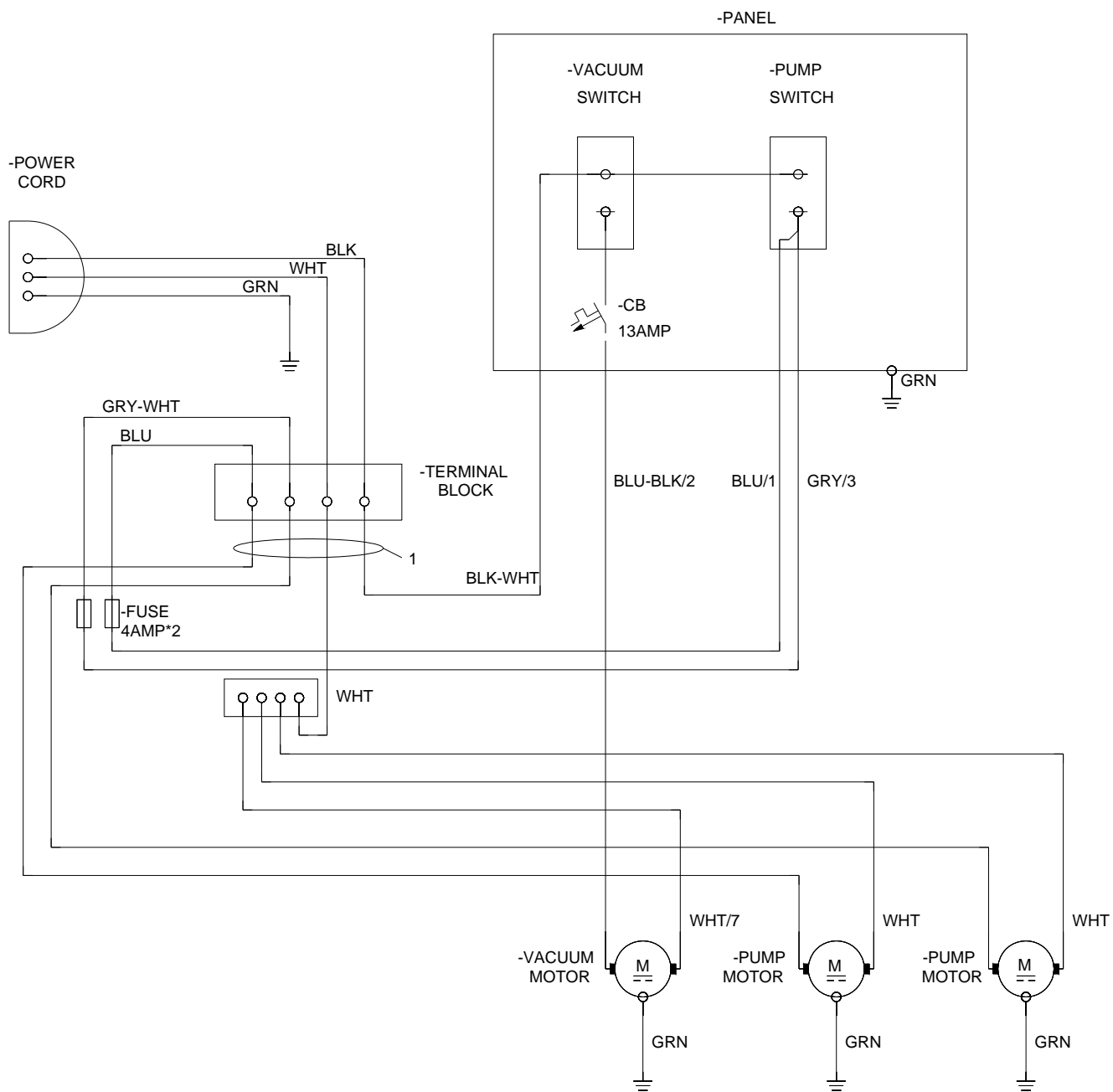
REF	PART NO.	PRV NO.	DESCRIPTION	QTY	SERIAL NO. FROM	NOTES
1	86329430	-	HOSE, 1/2ID WIRE BOUND X 11"	1		
2	86328890	-	PUMP ASM, PUMPOUT, FP	2		
3	86325390	-	STRAINER, 20 MESH, FLOJET	2		
4	86318390	-	HOSE, 1/2ID WIRE BOUND X 42"	3		
5	86010650	87018	WASHER, #10 X 9/16 OD	16		
6	86010630	87013	WASHER, 1/4 X 5/8 OD SS	2		
7	86233410	81270	CLAMP, 3/4 DIA CUSHION .406 DIA	1		
8	86298840	-	SCR, 10-32 X 1.0 HHMS PLT	8		
9	86005810	57245	NUT, 1/4-20 HEX NYLOCK SS	1		
10	86270990	57090	NUT, 10-32 HEX NYLOCK SS	8		
11	86240410	40078	HOSEBARB, 1/2 TEE	1		
12	86282250	39629	HOSE, 1/2ID WIRE BOUND X 3"	1		
13	86325400	-	ELL, 5/8 SLIP X 1/2 HOSEBARB	2		
14	86233150	20042	CLAMP, 3/8 HOSE (D-SLOT)	9		



REF	PART NO.	PRV NO.	QTY	DESCRIPTION	SERIAL NO. FROM	NOTES
1	86329050	-	1	PIPE ASM, INLET		
2	86328320	-	1	BAG, INLET FILTER		
3	86328310	-	1	TANK, REC, TRIM, STORM		
4	86325590	-	2	STRAINER, 30 MESH, 3/4F		
5	86323330	-	2	WASHER, 1/4 ID X 1.0 OD FLAT, BLK		
6	86321720	-	1	PIPE ASM, 1.5", VACUUM		
7	86317720	-	2	SCR, 5/16-18 X 2.50 BSHCS SS		
8	86317230	-	1	HOSEBARB, 1.5MPT X 1.5 W/FLNG		
9	86316710	-	2	BRKT, CORD, MOUNT		
10	86001350	140390	2	BUSHING, SPANNER .435 X 1.10		
11	86011020	89202	2	WHEEL, 3" DIA. CUSHION RUBBER		
12	86010670	87029	6	WASHER, 5/16 X 3/4 SS		
13	86010630	87013	4	WASHER, 1/4 X 5/8 FLAT SS		
14	86236860	82362	2	NIPPLE, 3/4 MPT X 1/2 MPT		
15	86275800	70546	6	SCR, 8 X 3/4 PFHT/S BLK ZINC		
16	86273750	70011	4	SCR, 1/4-20 X 5/8 HHCS SS		
17	86273740	70010	2	SCR, 1/4-20 X 1.50 HHCS SS		
18	86197040	57264	2	NUT, 5/16-18 HEX ACORN		
19	86001530	40039	2	HOSEHARDB, 1/2 MPT X 1/2 HOSE 90		
20	86004000	35255	1	GASKET, TANK LID		
21	86002380	20046	1	CLAMP, 2.25 WORM GEAR		
22	86227120	04095	1	ADAPTER, FLOAT 30 DEG		
23	86002620	260-64A	1	ACCESS, COVER CLEAR 6" W/RIM		
24	86199840	090-12A	1	FLOAT SCREEN CAGE ASSY		
25	86161460	15-808123	1	DUMP VALVE, 1 1/2"		



REF	PART NO.	PRV NO.	QTY	DESCRIPTION	SERIAL NO. FROM	NOTES
1	86277840	00-000167	4	SCR, 1/4-20 X 6.5 HHCS PLT		
2	86005810	57245	4	NUT, 1/4-20 HEX NYLOCK SS		
3	86274090	70092	2	SCR, 10-32 X 1.5 PPHMS		
4	86002390	20063	2	CLAMP, 1.75 WORM GEAR X .312		
5	86010630	87013	8	WASHER, 1/4 X 5/8 FLAT SS		
6	86278990	87017	4	WASHER, #8 X 3/8 FLAT		
7	86312340	-	1	MANIFOLD, VACUUM		
8	86313810	-	1	GASKET, VAC MANIFOLD, SINGLE		
9	86317630	-	4	SCR, #8 X 3/4" PPHSMS TYPE AB		
10	86239910	39306	1	HOSE, VAC, 1.5 ID X 17"L		
11	86318770	-	1	VAC ASM, 3-STAGE, 120V		
-	86135320	140687	-	SP BRUSHES SET (120V VAC)		
12	86312080	-	1	COVER, VAC MOTOR		
13	86312120	-	1	BASE, VAC MOTOR, 3-STAGE		
-	86319030	-	-	VAC HOUSING, 3 STAGE		INCLUDES 12, 13



REF	PART NO.	PRV NO.	QTY	DESCRIPTION	SERIAL NO. FROM	NOTES
1	86328420	-	1	HARNESS, MAIN, STORM		

Suggested Spare Parts

PART NO.	PRV NO.	DESCRIPTION	SERIAL NO. FROM	NOTES
86135320	140687	BRUSH SET, 120V VAC		
86199430	040-03	CASTER SWIVEL 4" 250# CAPACITY		
86002620	260-64A	ACCESS COVER CLEAR 6" W/RIM		
86319110	-	FUSE, 1/4" X 1-1/4", 4A		
86318770	-	VAC ASSY 3-STG, 120V		
86007140	72130	SWITCH, SPST 2-POSITION ROCKER		
86309790	-	WHEEL, 12" X 2.25"		
86001660	41236	HUBCAP, 5/8" SHAFT		

REF. NO.	MODEL: SERIAL #
1	N/A

Notes:
